

679CE Electrical Specifications:

Output Voltage:	16.0 Nominal (Internally adjustable +,- 0.5V)
Output Voltage Adjust Range	15.0 VDC to 18.0 VDC (internally adjustable)
Continuous Max Load Amps:	100 ADC @ 40C ambient (Input 12.5 Vdc) 70 ADC @ 60C ambient
Maximum Power Dissipation:	60 Watts @ Full Load (40A, 26.4 VDC out)
Maximum Input Current:	90 A (12 VDC in)
Overload Protection:	Electronically current limited (primary protection) Circuit Breakers at the Input (secondary protection)
Cooling:	Convection or Forced Air Thermostat Controlled Fan
Output Ripple Voltage:	10 mV RMS (20C to 75C) 50 mV RMS (-30C)
Input Voltage Range:	11 VDC to 15 VDC
Input Output Isolation:	Input and Output returns (Ground) are Common

Low Voltage Cutout Circuit:

Low Voltage cutout point:	Adjustable from 10.5 VDC to 13 VDC (internally adjustable) factory set for 10.5
Low Voltage cutout Hysteresis:	1.2 VDC @ 13.0 V / 0.9 VDC @ 10.5 VDC

Activation Circuits:

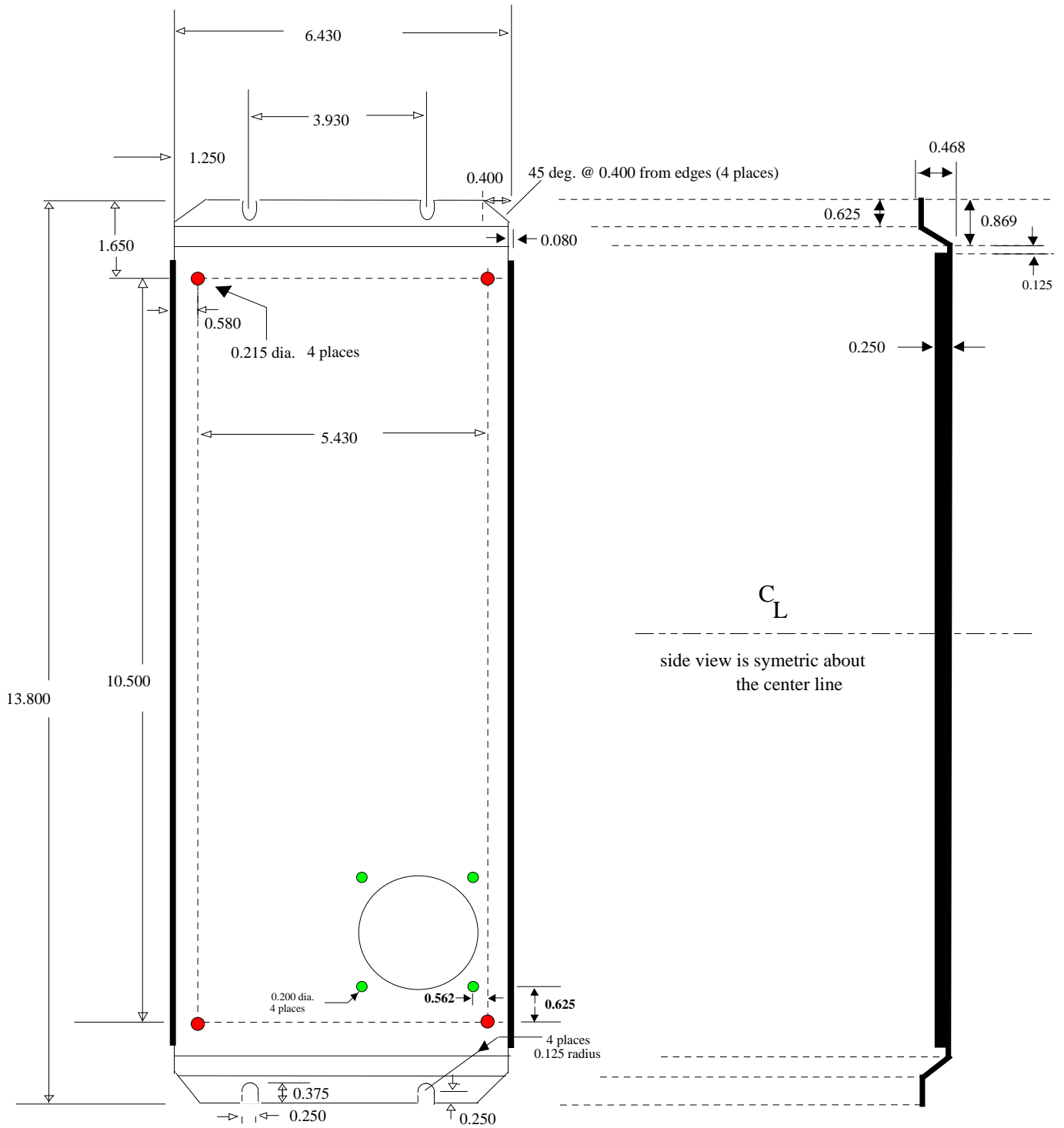
- 1) The unit may be activated through the command terminal #1 of terminal block TBA which when connected to +12 VDC of the vehicle will turn on the converter.
- 2) The converter may be turned on in sections by using the circuit breakers on the front panel. e.g. if only a 20 Amp load is required, section one only may be selected.

Ambient Operating Temperature:	-30C to + 60C
Maximum Humidity:	100% non condensing
Maximum Elevation:	15000 ft. above sea level

Mechanical Specifications:

Dimensions:	13.7 L x 7.0W x 3.5 H (inches overall maximum)
Shipping Weight:	10 lb.
Construction:	Steel base with Aluminum wrap around (painted)
Mounting Method:	#12 Hardware via front and rear mounting flanges
Mounting Centers:	13.3 x 3.87 (inches)
Hook Up:	3 Position Splicer Terminal Blocks

679CE Mounting Plate Mechanical Drawing



SEC America, LLC S. Burlington, VT 05407	DWG. NO. 63-1448	REV	
		C	